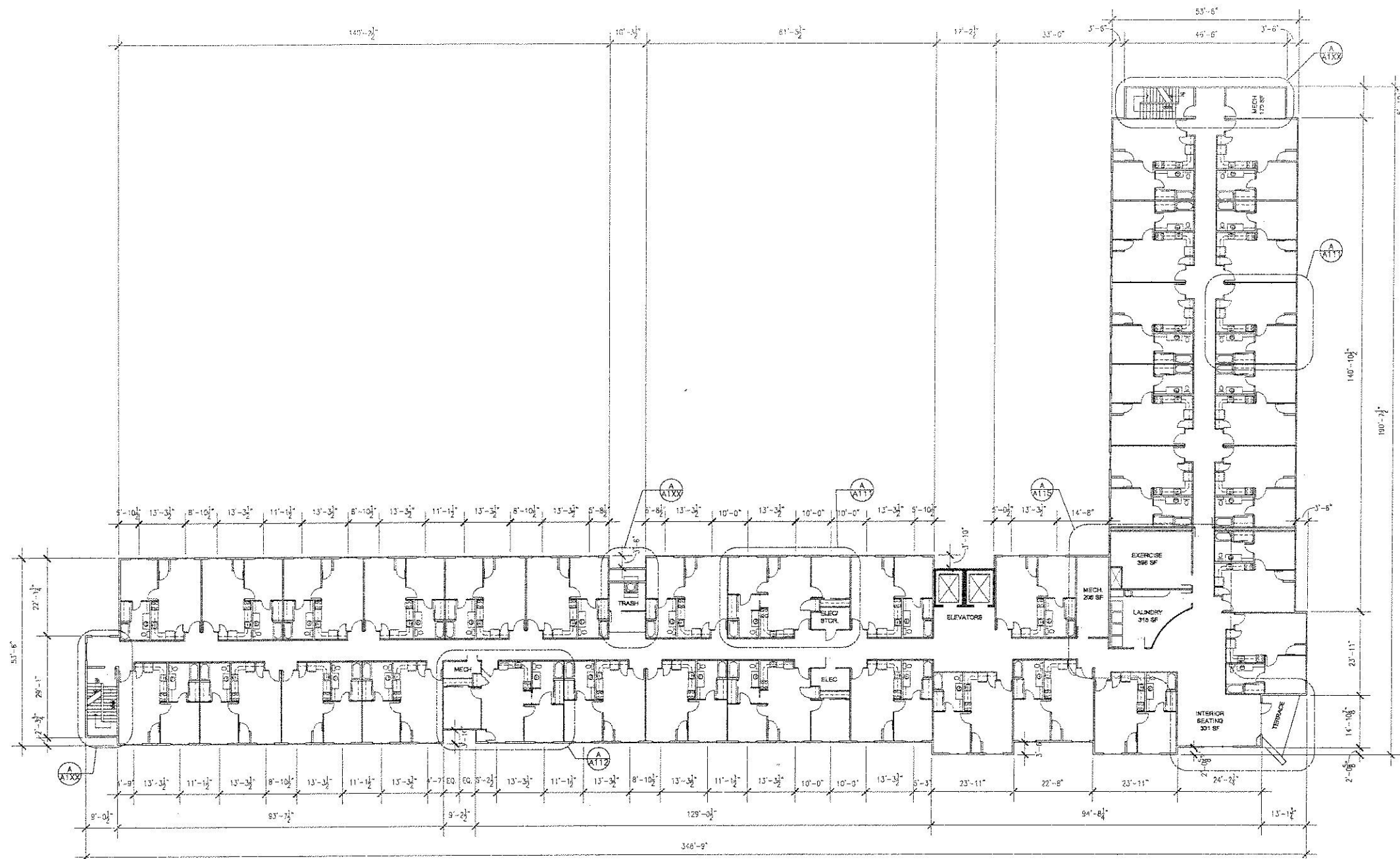




ROSEMANN & ASSOCIATES, P.C.
 ARCHITECTURE INTERIOR DESIGN
 PLANNING CONSULTANTS
 1221 WASHINGTON AVENUE
 ST. LOUIS, MO 63103-1903
 TEL: 314/298-1448
 FAX: 314/621-1211
 EMAIL: design@rosemann.com
 © 2006 Rosemann & Associates, P.C.
 KANSAS CITY, MO • OVERLAND PARK, KS • ST. LOUIS, MO

**PRELIMINARY
 NOT FOR CONST.**

GRAND SOUTH SENIOR
 Grand And Winnebago, ST. LOUIS,
 MO



A SECOND FLOOR PLAN
 SCALE: 1/16"=1'-0"

LAST DATE REV. AMENDED IN: December 11, 2006 @ 4:45 PM
 LOCATION: 1411 South Grand Street, St. Louis, MO 63103
 PROJECT: Grand South Senior Center
 PROJECT NO.: 06063

SHEET TITLE
 SECOND FLOOR PLAN

PROJECT NUMBER: 06063
 FILENAME: Second Floor
 Plan.dwg

SHEET NUMBER

A-101

DRAWN BY: [Name] CHECKED BY: [Name]